

# Company Profile



IESPL

=

Integrated

+

Engimech

+

Solutions

+

Pvt. Ltd.

## Address

- G-27 Green City,
- K-7,Road
- Gandhinagar- 382026, Gujarat, India,

## Contact

- Pratik Sharma +91 99250 27464
- Ravi Patel +91 84606 12341

## Email

- iespl\_pratik@yahoo.com
- iespl@iespl.in

## Web

- [www.iespl.in](http://www.iespl.in)

IESPL

=

Integrated

+

Engimech

+

Solutions

+

Pvt. Ltd.

***“IESPL” “Integrated Engimech Solutions Pvt. Ltd.”***

*We are well focused on advance system and instrumentation technology to deliver innovation in automation through specialized services and solutions.*

# IESPL– Introduction

## ***IESPL’s offerings:***

- ❖ Automation Solutions for PLC / SCADA / DCS Systems.
  - ❖ GPRS,GSM,M2M & WiFi Based Automation.
  - ❖ Online Remote Monitoring & Control System.
  - ❖ AC/DC/SERVO Drive based control panels.
  - ❖ Thyristor based Temperature control panels for Electrical Furnaces, Ovens and Heating Equipments.
  - ❖ Service support for all the services mentioned above.
  - ❖ We also undertake system integration jobs for various industrial process control and Automation systems.
- 
- ✓ We can manufacture custom built Panels of power distribution as well automation systems with high quality automation products and including all standards.
    - As a Panel manufacturer we can design and manufacture Panels like MCC, PCC, Distribution Panel, Starter & lighting power distribution.

**IESPL = Integrated + Engimech + Solutions + Pvt. Ltd.**

- We also can manufacture the automation panels including PLC, AC Drives, DC Drives, Servo Drives and HMI etc.
- ✓ We also offer A.C. Variable Frequency Drives, Servo drive, D.C. Drives as per required application such as Siemens, Parker (SSD), Schneider, Yaskawa, ABB, and Delta etc.
- ✓ We provide totally integrated automation with PLC, HMI, SCADA including Third Party integration using various protocols like ModbusRTU, ModbusTCP, Profibus, CANOpen and TCP-IP etc.
  - IESPL team has rich experience in several PLC and Software platform including Allen Bradley, Siemens, Delta, Schneider, Vipa as well as various SCADA software such as Wincc, VijeoCitect and Movicon
  - We have also experience in implementation of several control and automation projects at various levels of plant from machine to process as well as system design including supply, installation and commissioning of PLC/SCADA system and field instruments.
- ✓ IESPL gives best temperature control solutions in heating applications through Thyristor based power control and precision PID Controller, Profiler, Chart Recorder like Gefran, Autonics, Yokogawa, Omron etc.
- ✓ IESPL provides service support for Retro Projects and customized automation with proper solution.
- ✓ IESPL also completes projects from basic to detail engineering including system architecture, documentation as well as complete installation and commissioning with best quality.

### Some of the areas where IESPL can provide solutions...

- ❖ Rolling Mill - CRM, HRM, Cut to length, Slitter machine
- ❖ Gas heating and Electrical heating Based Annealing Furnace
- ❖ Harris M-300,4-colour Offset Paper Printing machine
- ❖ Crabtree 2 Color Offset Metal Printing Press
- ❖ SS Wire drawing machine
- ❖ Aluminum Pressure Die cast Machine
- ❖ BOPP & Polymer film stretching plant
- ❖ Bolt Forming Machine Automation
- ❖ Pasteurizer Control System of Dairy Industries
- ❖ Homogenizer Control System of Dairy Industries
- ❖ Cooper Planner Machine Automation
- ❖ **GPRS Cloud Based Remote Control System With Data logging.**
- ❖ Siemens Scada GPRS Based System of Waste water Collection Of ETP Plant.
- ❖ Industrial RO system-SWRO,CDRO, Ultra Filtration
- ❖ Retrofitting Of Metalize Machine
- ❖ PLC based Vertical Turret lath Machine
- ❖ PLC based Surface Grinding Machine of Foil Mill
- ❖ Siemens Scada Based C.I.P.System of Dairy Industries
- ❖ Siemens Scada System for 8 Zone Backing Furnace
- ❖ Retrofitting Of Skoda & Union make Boring machine
- ❖ 16 Color Rotary Screen Printing for Textile Industry
- ❖ PLC Based Head Box Control For Pulp & Paper Mill
- ❖ Ammonia based Refrigeration Plant Automation.
- ❖ Customize Development in Automation

IESPL aim to achieve maximum customer satisfaction with providing highest quality products and best automation solution & services.

# AC Drive



**SIEMENS**



**Schneider**  
Electric



**Danfoss**



**DELTA**  
DELTA ELECTRONICS, INC.  
[www.delta.com.tw/industrialautomation](http://www.delta.com.tw/industrialautomation)

# AC Drive



**SIEMENS**



**Parker**

**IESPL** = **Integrated** + **Engimech** + **Solutions** + **Pvt. Ltd.**

# PLC- Programmeble Logical Controller



**SIEMENS**



**Schneider**  
Electric



**VIPA**  
art of automation

# HMI-Human Machine Interface



**SIEMENS**



**Schneider**  
Electric



**DELTA**  
DELTA ELECTRONICS, INC.  
[www.delta.com.tw/industrialautomation](http://www.delta.com.tw/industrialautomation)

IESPL = Integrated + Engimech + Solutions + Pvt. Ltd.



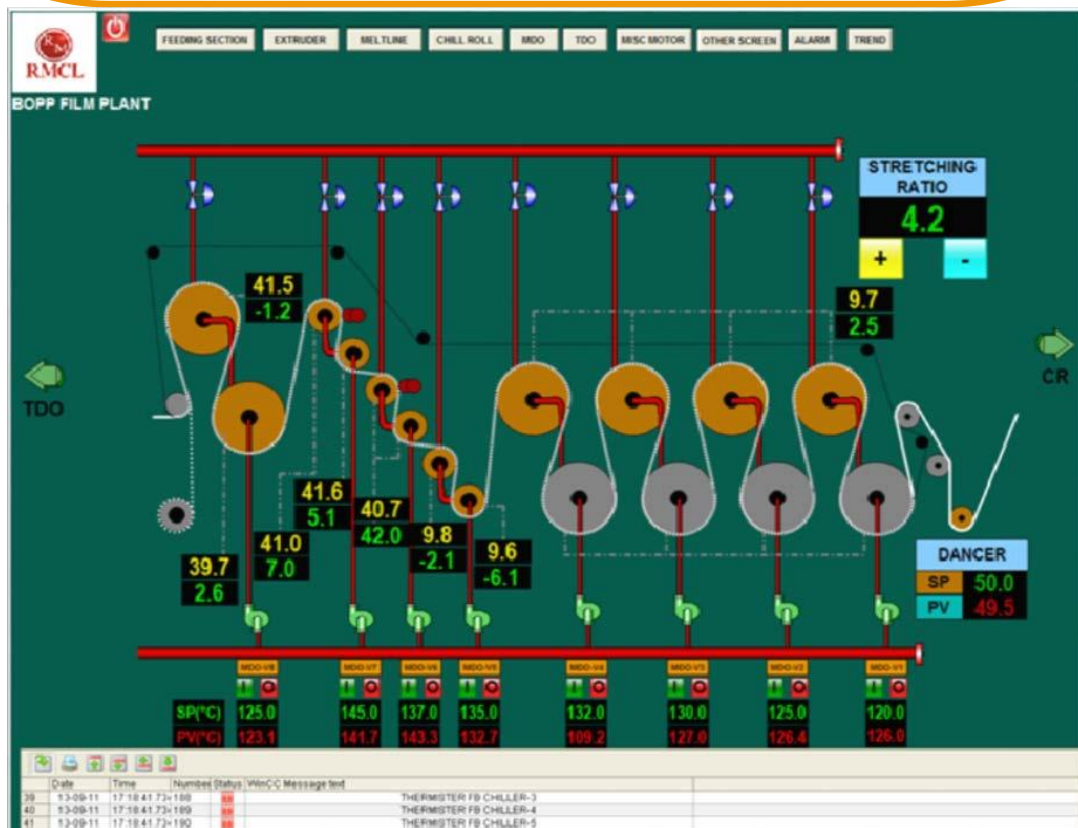
# SCADA



**SIEMENS**  
**WinCC®**  
Professional

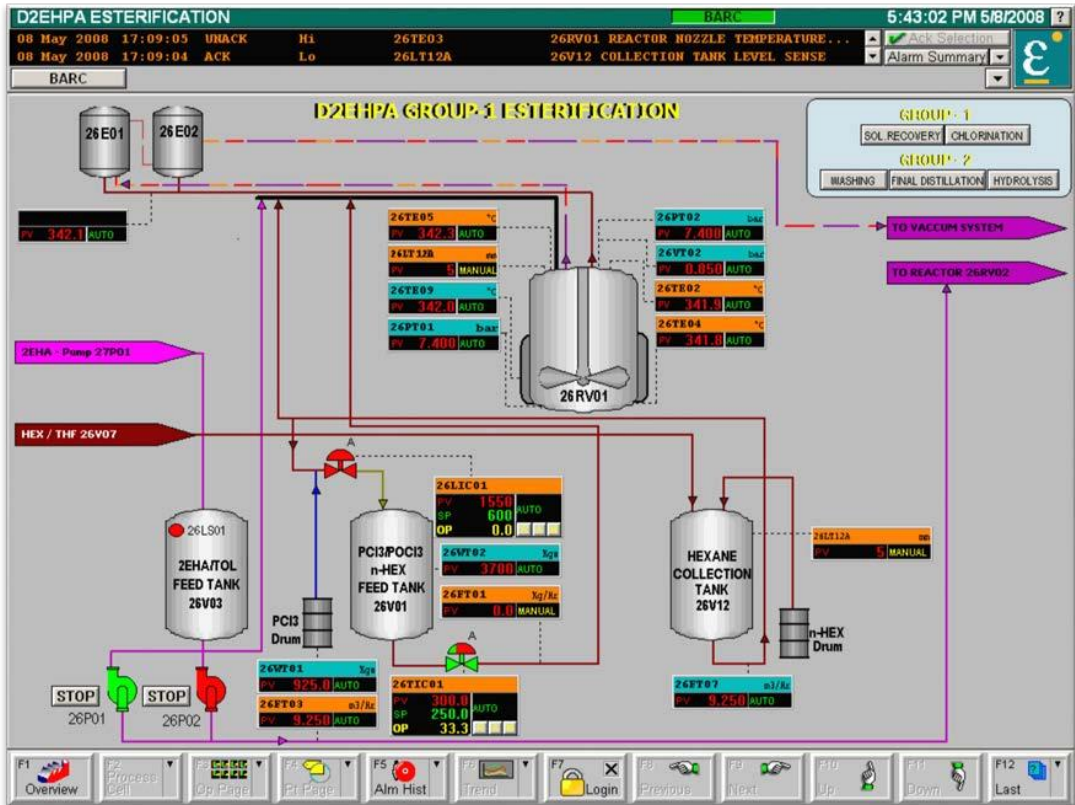
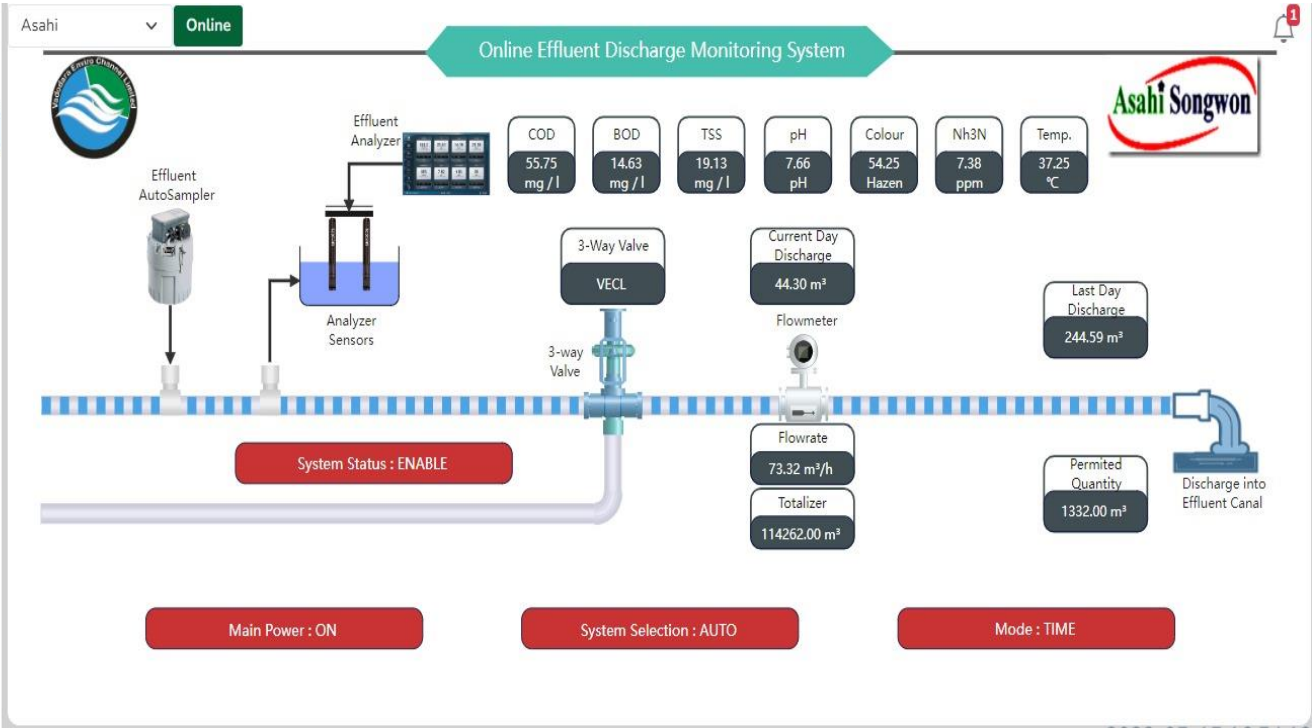
**Schneider**  
Electric

**Vijeo Citect**  
a SoCollaborative software



**IESPL** = **Integrated** + **Engimech** + **Solutions** + **Pvt. Ltd.**

## SCADA



**IESPL = Integrated + Engimech + Solutions + Pvt. Ltd.**



# Temperature Controller



**GEFRAN**

**JUMO**

**OMRON**



invenys  
**Eurotherm**

**GEFRAN**

**JUMO**

**IESPL** = **Integrated** + **Engimech** + **Solutions** + **Pvt. Ltd.**

# Chart and Paperless Graphical Recorder

**Chart recorder** is an electromechanical device that records an electrical or mechanical input trend onto a piece of paper (the chart). Chart recorders may record several inputs using different color pens and may record onto strip charts or circular charts.

## **Paperless Graphic Recorder**

- *Easy, Secure and Adaptable Data Recording*
- *Full color, high resolution, touch screen display*
- *Batch functionality*
- *Remote view and configuration*
- *Local printing*



inven'sys  
Eurotherm

GEFRAN

JUMO

IESPL = Integrated + Engimech + Solutions + Pvt. Ltd.

# Ac Drive Base Control Panel



IESPL = Integrated + Engimech + Solutions + Pvt. Ltd.

# Starter Panel



IESPL = Integrated + Engimech + Solutions + Pvt. Ltd.



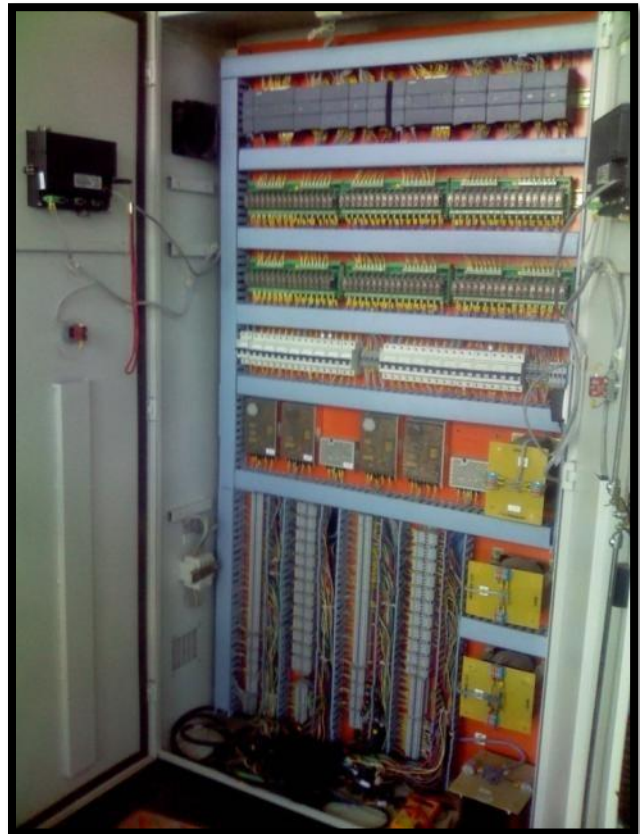
# Customise Control Panel



IESPL = Integrated + Engimech + Solutions + Pvt. Ltd.



# PLC Base Control Panel



IESPL = Integrated + Engimech + Solutions + Pvt. Ltd.

# GPRS Base Control Panel



IESPL = Integrated + Engimech + Solutions + Pvt. Ltd.

# Remote Pendant Unit



IESPL = Integrated + Engimech + Solutions + Pvt. Ltd.



# Digital Dc Drive Base Panel



IESPL = Integrated + Engimech + Solutions + Pvt. Ltd.