



UNLOCK THE FUTURE WITH

Integrated Engimech Solutions Pvt. Ltd.

Your Reliable Automation Solution & IIoT Partner.

"AUTOMATION **TODAY**, AUTOMATIC **TOMORROW**,"

www.iespl.in

About US

- With over **12+ years** of successful experience,
- ASI Technology Pvt. Ltd. is dedicated to driving sustainable development in the fields of **Industrial Automation and Industrial Internet of Things (IIoT)**.
- Our expertise spans a wide range of applications, including **Machine Automation, Process Automation, Factory Automation, and Industry 4.0 solutions**.
- We are committed to providing innovative and efficient automation solutions that enhance productivity while promoting **environmental sustainability and industrial revolution**.

► Integrated Engimech Solutions Pvt. Ltd.

Our Mission

“Our mission is to **empower industries** with cutting-edge automation technologies that foster sustainable practices and operational excellence.

We aim to integrate advanced IIoT solutions to optimize processes, minimize waste, and enable data-driven decision-making for a more **sustainable future**.”

Why Choose US ?

“We understand IoT inside out, ensuring accurate, reliable, and secure data collection and integration for your industrial needs.

Our Solutions

- We offer a comprehensive range of automation products to meet diverse industry needs, including:
- **Automation Control Panels:** Reliable and efficient panels designed for seamless integration with automation systems.
- **PLC (Programmable Logic Controllers):** Versatile controllers for automating industrial processes.
- **HMI (Human-Machine Interface):** User-friendly interfaces that enhance operator interaction with machines.
- **SCADA (Supervisory Control and Data Acquisition):** Systems for real-time monitoring and control of industrial operations.
- **VFD (Variable Frequency Drives):** Energy-efficient solutions for motor control that optimize performance.
- **AC/DC/Servo Drives:** High-performance drives for precise control of various motor types.
- **Thyristor Power Controllers:** Efficient power control solutions for industrial heating applications.
- **SSR (Solid State Relays):** Reliable solutions for switching and controlling electrical loads.
- **PID Controllers:** Advanced controllers for maintaining desired process parameters.
- **Process Recorders:** Instruments for logging and analyzing critical process data.
- **Sensors & Instruments:** A wide range of sensors and instruments for measuring various process variables.
- **Protocol Converters & Network Gateways:** Devices for enabling communication between different protocols and systems.
- **RTUs (Remote Terminal Units):** Solutions for remote monitoring and control of field devices.
- **IIoT Platforms & Cloud SCADA:** Comprehensive platforms for integrating IIoT devices and enabling advanced data analytics.

► Integrated Engimech Solutions Pvt. Ltd.

Industries We Serve

- We cater to a diverse range of industries, including:
- **Process Industries:** Optimizing operations for chemical, pharmaceutical, and food & beverage sectors.
- **Machine Industries:** Optimizing operations for automotive, aerospace, metalworking, and packaging sectors.
- **Water & Wastewater Management:** Enhancing efficiency and compliance in water treatment and wastewater management processes.
- **Waste Management:** Providing automation solutions for effective waste collection, sorting, and processing.
- **Smart City Solutions:** Integrating automation technologies to improve urban infrastructure and services.
- **Smart Industry Applications:** Transforming traditional manufacturing into smart, connected environments.
- **Heat Treatment:** Automating processes to ensure precise temperature control and efficiency.
- **Oil & Gas:** Delivering automation solutions for exploration, production, and refining operations.
- **Utilities:** Enhancing the management of energy and utility services through automation.
- **HVAC:** Improving efficiency and control in heating, ventilation, and air conditioning systems.

► Integrated Engimech Solutions Pvt. Ltd.

Industrial Segments

Process/ Pharma &
Chemicals

Water/Waste water

Heat Treatment

Oil & Gas

Utility HVAC

Steel/ Glass/ Ceramic

Automation Solutions

Power/ Control Panels

VFD/ Servo/ DC Drives

Thyristor Power Controller

Profile Controller/ Recorder
Data Logger

Sensor/ Process Instruments

PLC/ HMI/ SCADA

Industrial IOT Platform
Cloud SCADA/ Mobile App

Make Your Machine
Intelligent

Applications : IIoT System

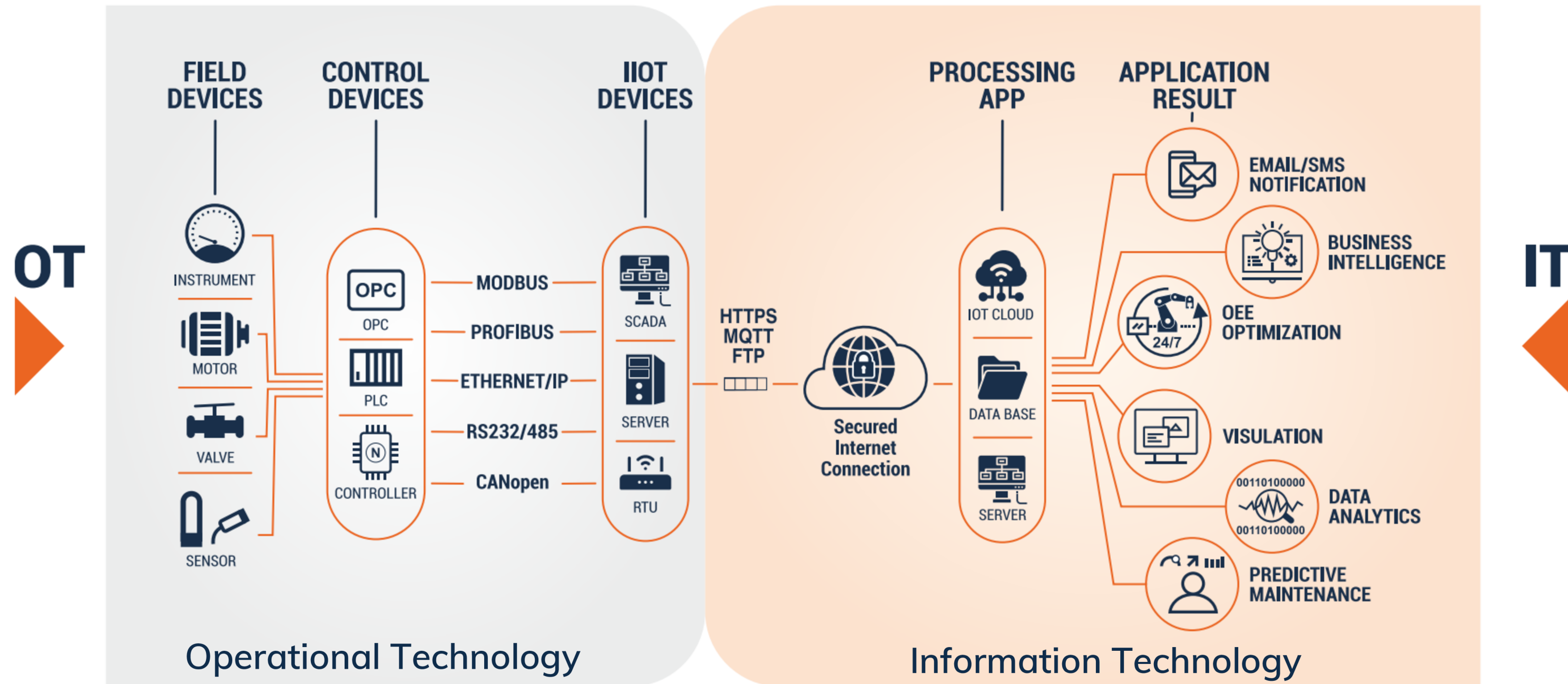
- Water/ wastewater Remote Flow monitoring System
- Sump Room monitoring system
- CETP/ FETP/ WTP/ STP monitoring system
- Energy Monitoring System
- Solar Monitoring System
- Power generation & transmission monitoring system
- Weather Monitoring System
- DG monitoring system
- Chiller monitoring system
- HVAC, Temperature Humidity monitoring system
- DG, Battery, Oil tank monitoring System
- PLC/HMI/ SCADA remote access anywhere
- Machine & Plant OEE (Overall Equipment Effectiveness)
- Pump Health Monitoring System
- Boiler Monitoring system
- Crane/ Hoist Monitoring system
- Road Construction Machine Monitoring system
- Dairy Process Monitoring system
- Pharma Process Monitoring system
- Textile Process Monitoring system
- Oil & Gas Process Monitoring system
- Oven, Furnace, heat treatment Monitoring system
- Smart City IIoT applications
- Remote Control Industrial & Factory Processes

Key Highlights - IIoT Solutions

- **Accurate Data Collection:** The right sensors and instruments for precision, driving true insights.
- **Seamless Digital Integration:** Accurate data easily integrated with a Remote Terminal Unit (RTU).
- **Advanced RTU Features:** Seamless data transmission, offline storage, and redundant internet connections to ensure reliability.
- **Diverse Connectivity Options:** RTU supports 4G/5G, WAN, Wi-Fi, LAN, USB, RS232/485, and NFC, providing robust internet and network connectivity.
- **Cybersecurity & Compliance:** Built-in firewalls, IP-rated protection, and certified IIoT hardware and software integration.
- **Smart IoT Platform:** Powered by a smart database, web applications, intelligent integration, and cloud-based SCADA.
- **Custom Reports & Notifications:** Tailored business insights with multi-level notifications and user administration.
- **AI & Logical Integration:** Advanced AI-driven systems for optimized operations and decision-making.

► Integrated Engimech Solutions Pvt. Ltd.

IIoT (Industrial Internet of Things) - Architecture



► Grow Your Business With Industrial 4.0

Features of RTU

RTU (Remote Terminal Unit)

- Industrial Security-certified hardware & software
- 4G/5G, WAN, Wi-Fi, LAN, USB, RS232/485, and NFC, providing robust internet and network connectivity
- All major PLC protocols
- Data logging and alarm notification
- Local web-dashboard for remote monitoring

► Integrated Engimech Solutions Pvt. Ltd.

- OPC UA server to publish data to factory systems
- Full flexibility to send data to any server
- Server connectivity via MQTT, VPN, HTTPS etc.
- Routing & Gateways features
- Data Acquisition, Data Storage & Data Publishing
- FTP client and server & Script interpreter
- Worldwide acceptances & approvals

Features of IoT Platform

IIoT Platform:

- Wedget & Customized P&ID deshbord
- Live and Historical Trends & Chart
- Data logging in CSV, Excel & PDF
- Customized report generation
- Scheduler Time based Event
- Smart Notification Alarm & messeges (Email, SMS)
- OPT Based smart logging user admistration & Control
- RTU Device Health Monitoring system
- Support ticket system, ERP, SAP, Whatsapp integration
- Third party web application integration.
- Mobile Application devlopment.
- Smart Billing system.
- GPCB, CPCB Integration.
- Easy acess smart menu navigation
- Customized web page devlopment.

► Integrated Engimech Solutions Pvt. Ltd.

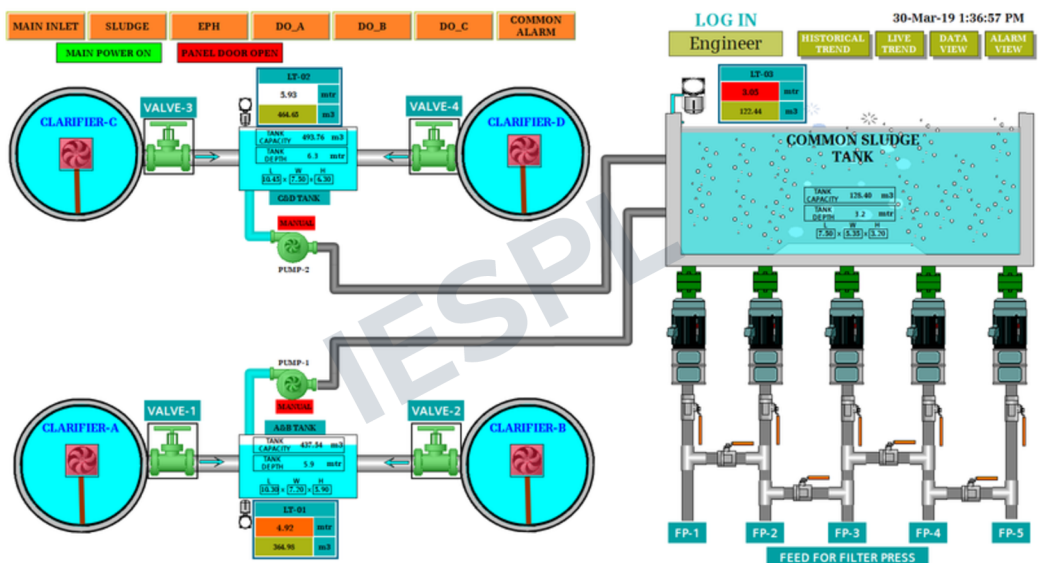
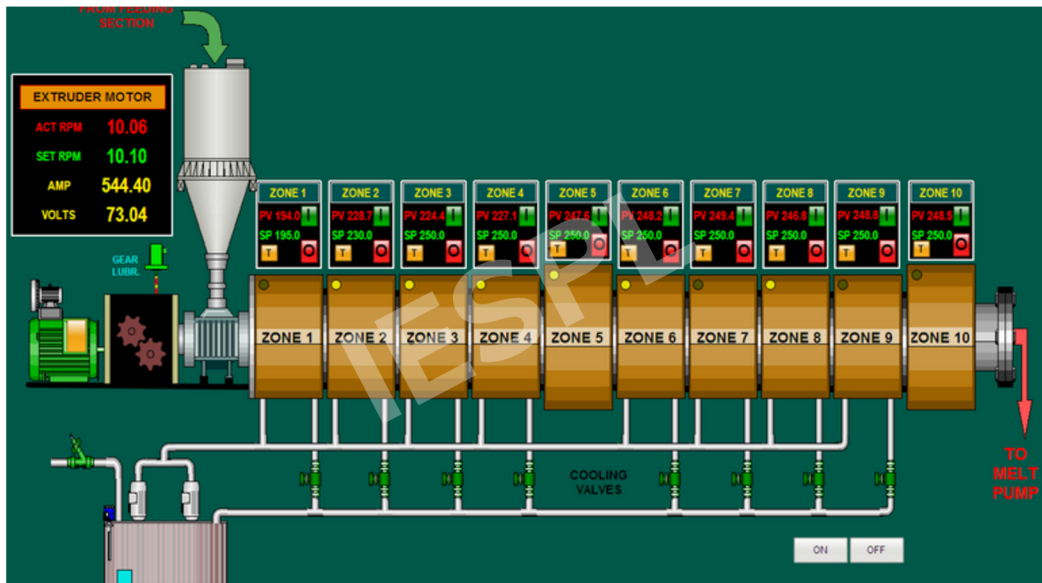
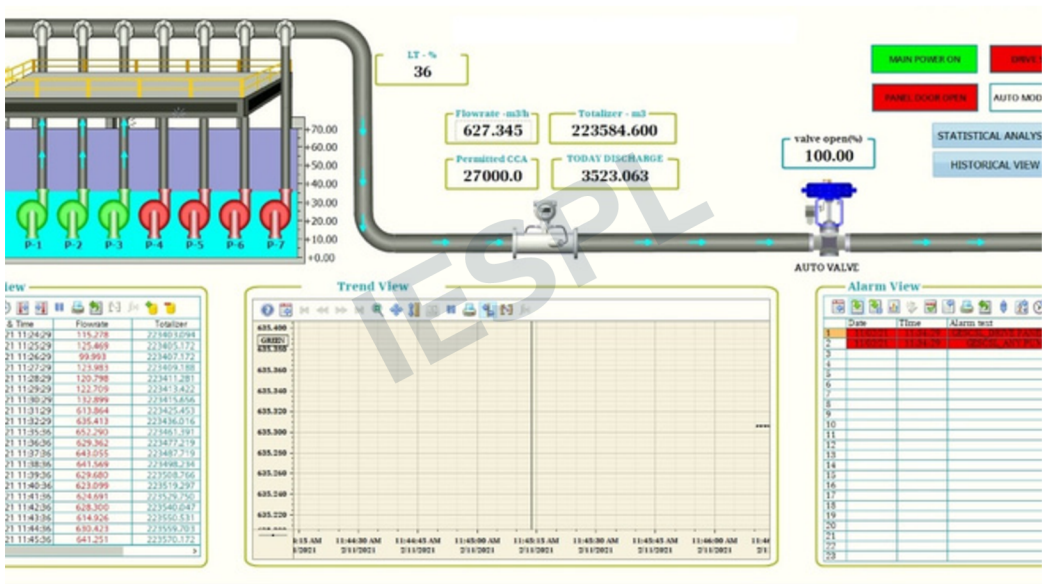
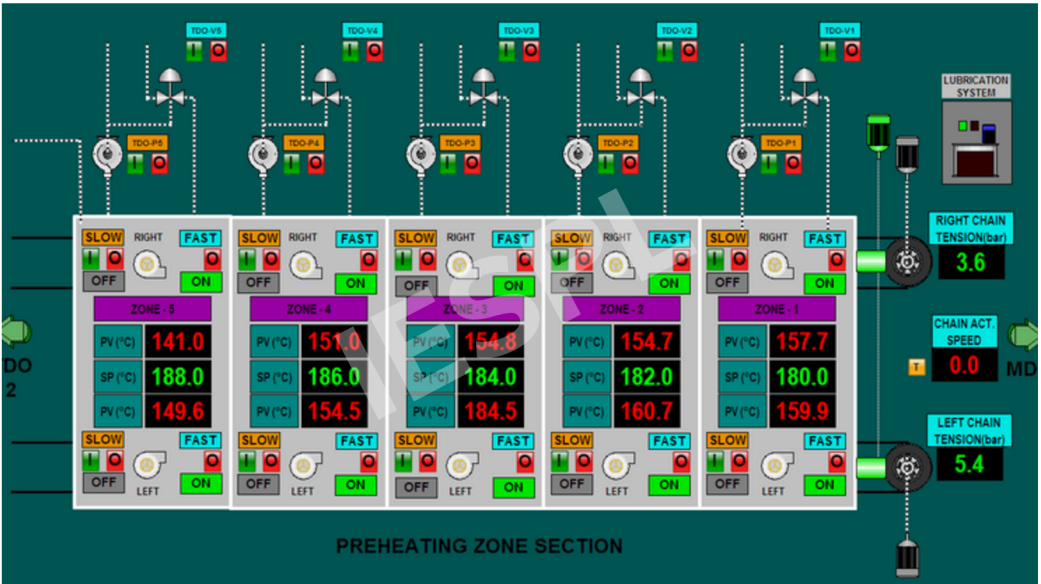
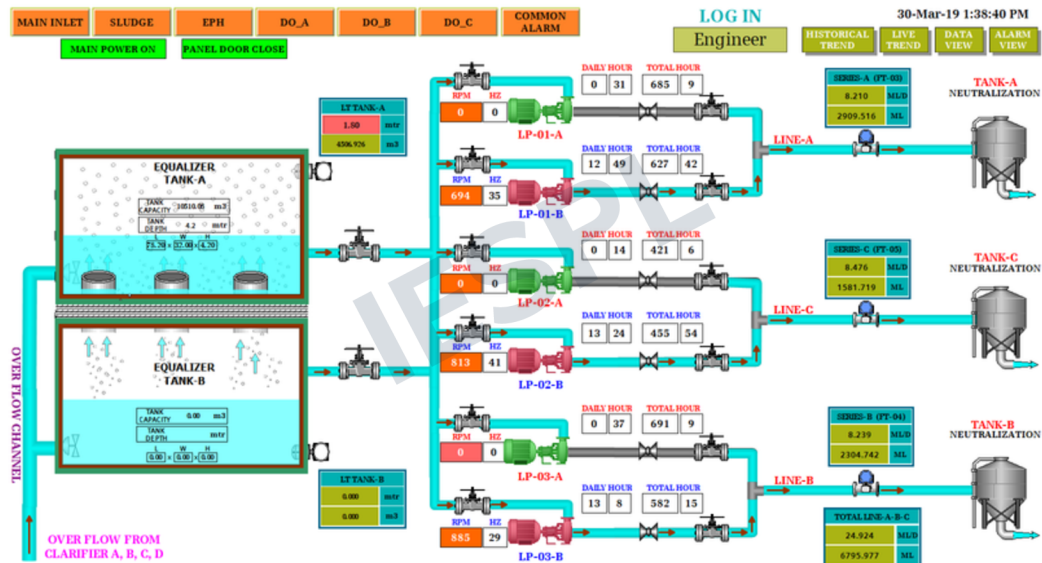
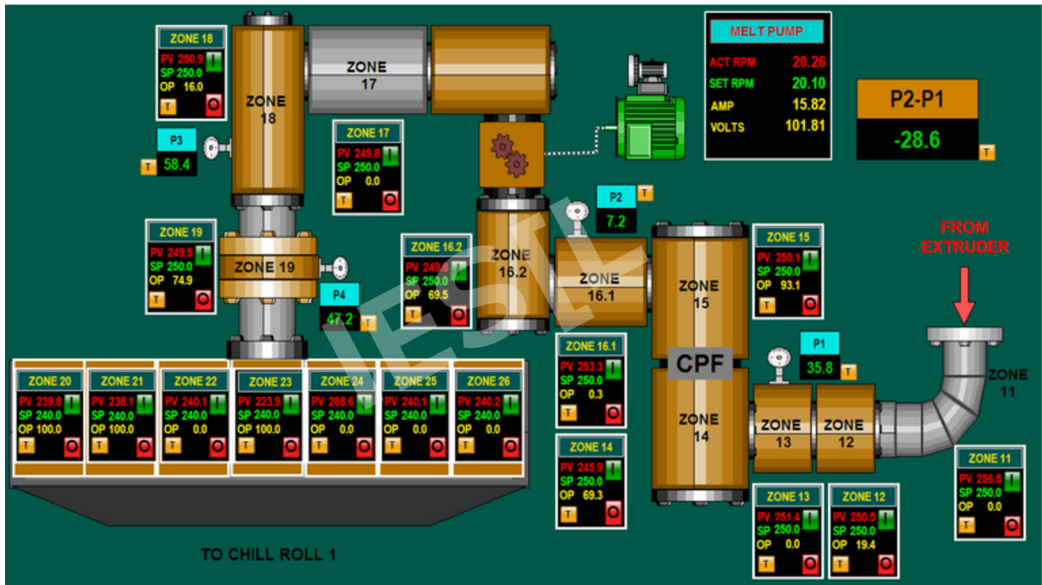
IT - OT Integration IIoT Gateways & RTU



► Integrated Engimech Solutions Pvt. Ltd.

We are Supply & Design

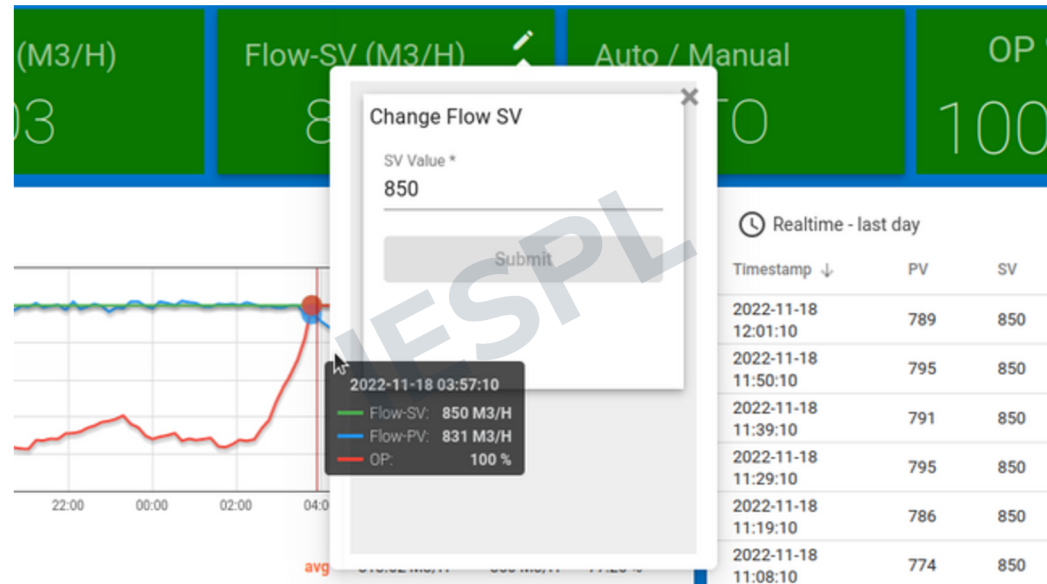
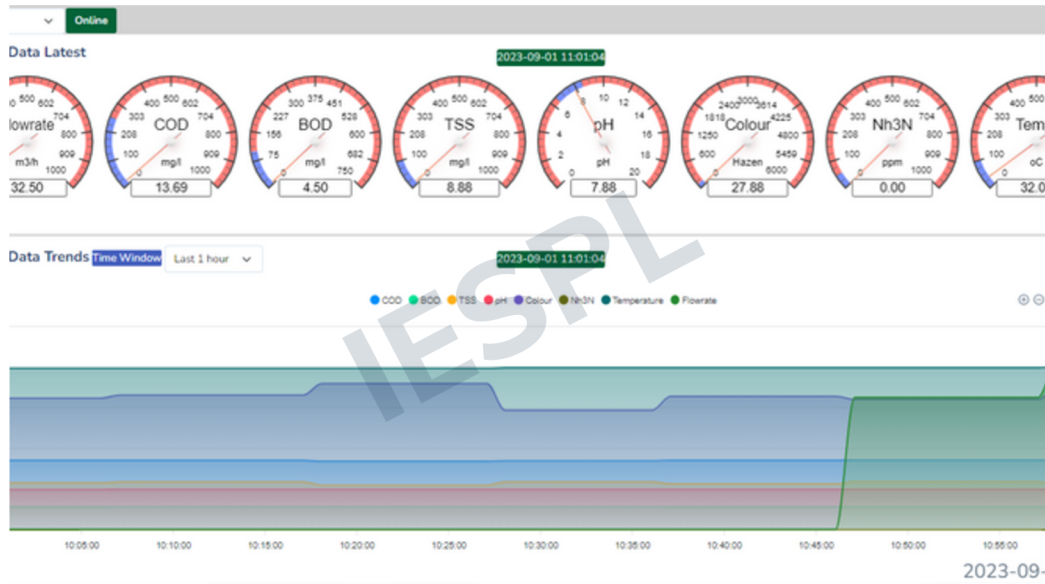
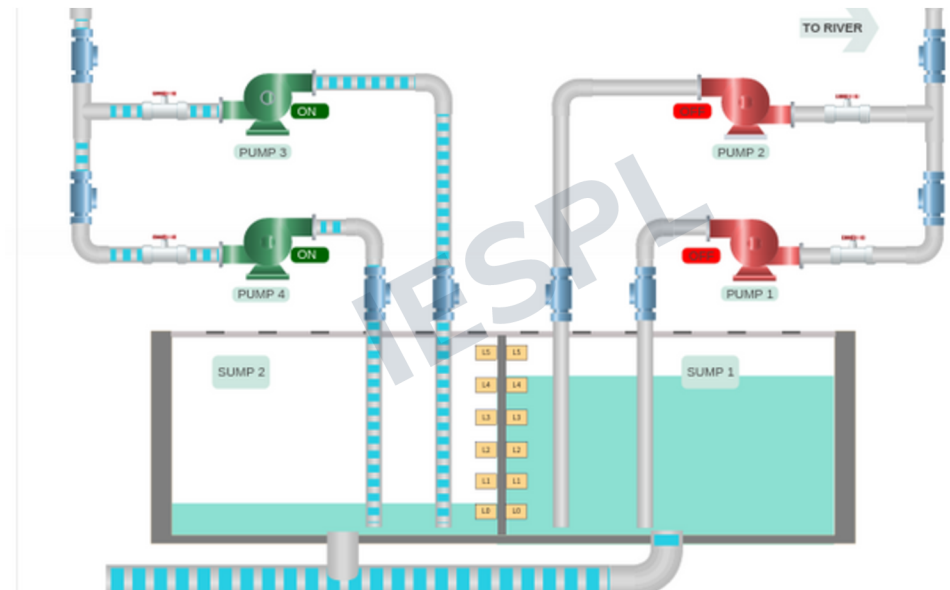
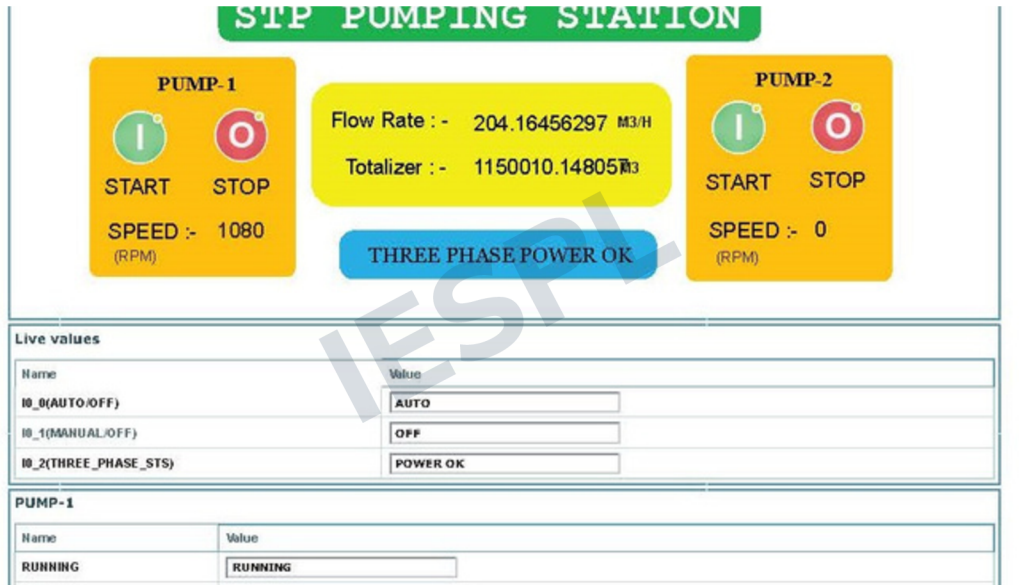
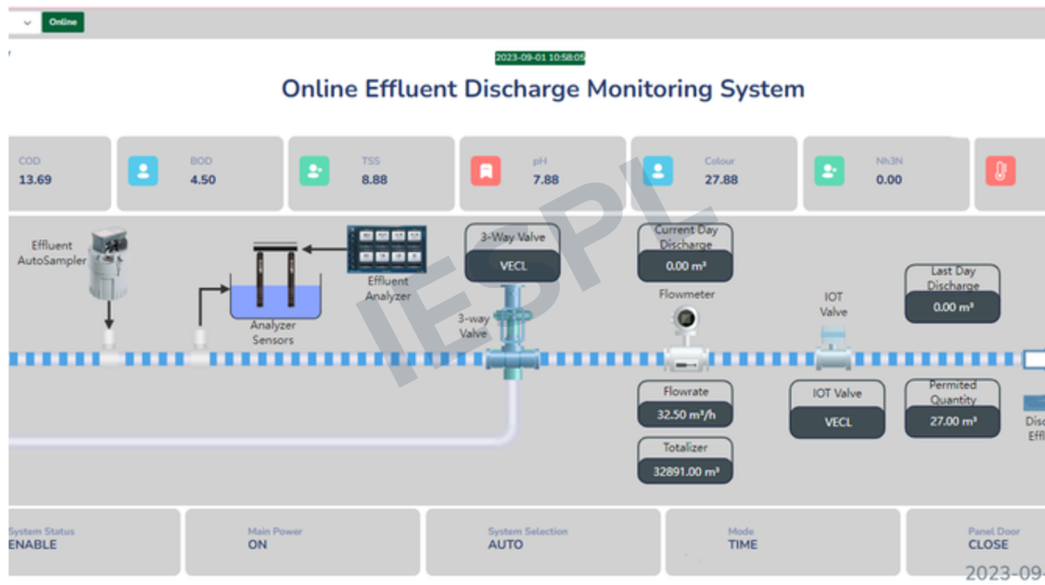
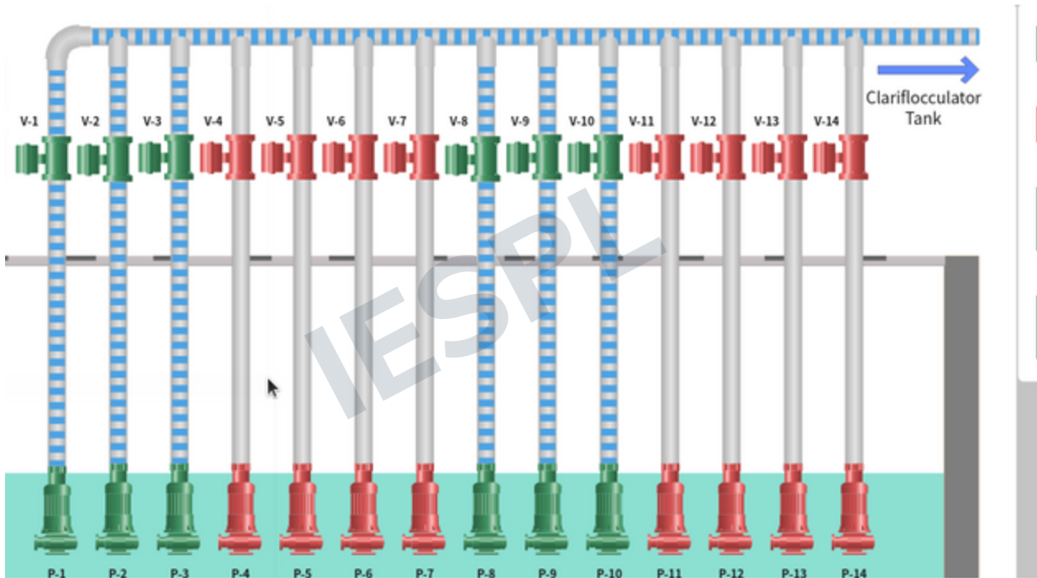
SCADA - Supervisory Control And Data Acquisition



We are Expert and Specialist in

Industry 4.0- IIoT Platform

Cloud SCADA / Web SCADA



► Integrated Engimech Solutions Pvt. Ltd.

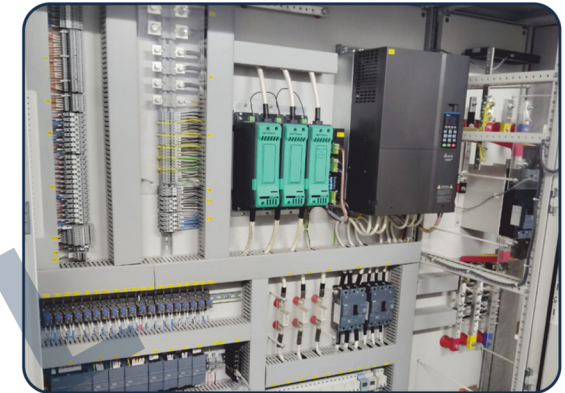
Smart Industrial Solution with Smart Automation Products

► Integrated Engimech Solutions Pvt. Ltd.



We are Manufacturing- Power & Automation Control Panels

► Integrated Engimech Solutions Pvt. Ltd.



We are Manufacturing- Power & Automation Control Panels

► Integrated Engimech Solutions Pvt. Ltd.



We are Manufacturing-

Power & Automation Control Panels



► Integrated Engimech Solutions Pvt. Ltd.

We create **Success**
Story with
Our valuable
Customers



► Integrated Engimech Solutions Pvt. Ltd.

We create **Success**
Story with
Our valuable
Channel
Partners

The Siemens logo, consisting of the word "SIEMENS" in a bold, blue, sans-serif font.

Siemens



WEG

The Ewon logo, featuring the word "Ewon" in a bold, blue, sans-serif font, with "BY HMS NETWORKS" in a smaller font below it.

Ewon



Delta

The Gefran logo, consisting of the word "GEFRAN" in a bold, blue, sans-serif font.

Gefran

The Phoenix Contact logo, featuring a stylized "P" icon followed by the words "PHOENIX CONTACT" in a bold, black, sans-serif font.

Phoenix Contact

The Autonics logo, featuring the word "Autonics" in a bold, orange, sans-serif font.

Autonics



Allied Moulded

The Pro-face by Schneider Electric logo, featuring the word "Pro-face" in a bold, blue, sans-serif font, with "by Schneider Electric" in a smaller font below it.

Pro-face

The Teltonika logo, featuring a stylized blue "T" icon followed by the word "TELTONIKA" in a bold, blue, sans-serif font.

Teltonika

► Integrated Engimech Solutions Pvt. Ltd.



Integrated Engimech Solutions Pvt. Ltd.

**G-27, Green City, K-7 Road, Sector-26, Gandhinagar-382028, Gujarat,
India. (M):+91- 99250 27464 (E):iespl@iespl.in (W): www.iespl.in**